



open source User Interface for LIBPF

the C++ Library for Process Flowsheeting

LIBPF is a tool to rapidly prototype and deploy small-footprint custom applications implementing computations for training, process engineer support, on-line process diagnostic, data reconciliation.

The LIBPF **UI** (User Interface) product adds a user friendly interface and enhanced reporting capabilities to LIBPF.

Features

Available in English, French, German, Italian and Portuguese

Source code distributed under the GPL open source license

Runs under Windows 2000, XP and Vista, Apple OSX 10.2 - 10.5 and Linux

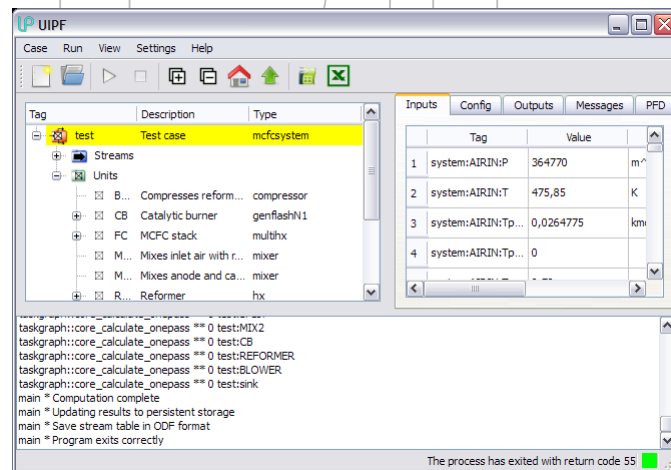
Change selected inputs and configurations

Start and stop computation kernel

Browse and read selected results

Generate spreadsheet reports in Excel or OASIS ODF

User can not see nor change details of underlying models



For more informations, please visit <http://www.libpf.com> or write to LIBPF-sales@3ip.it